



Gatwick Airport Northern Runway Project

Environmental Statement

Appendix 8.10.1 – Tree Survey Report and Arboricultural Impact Assessment – Part 5 - Clean Version

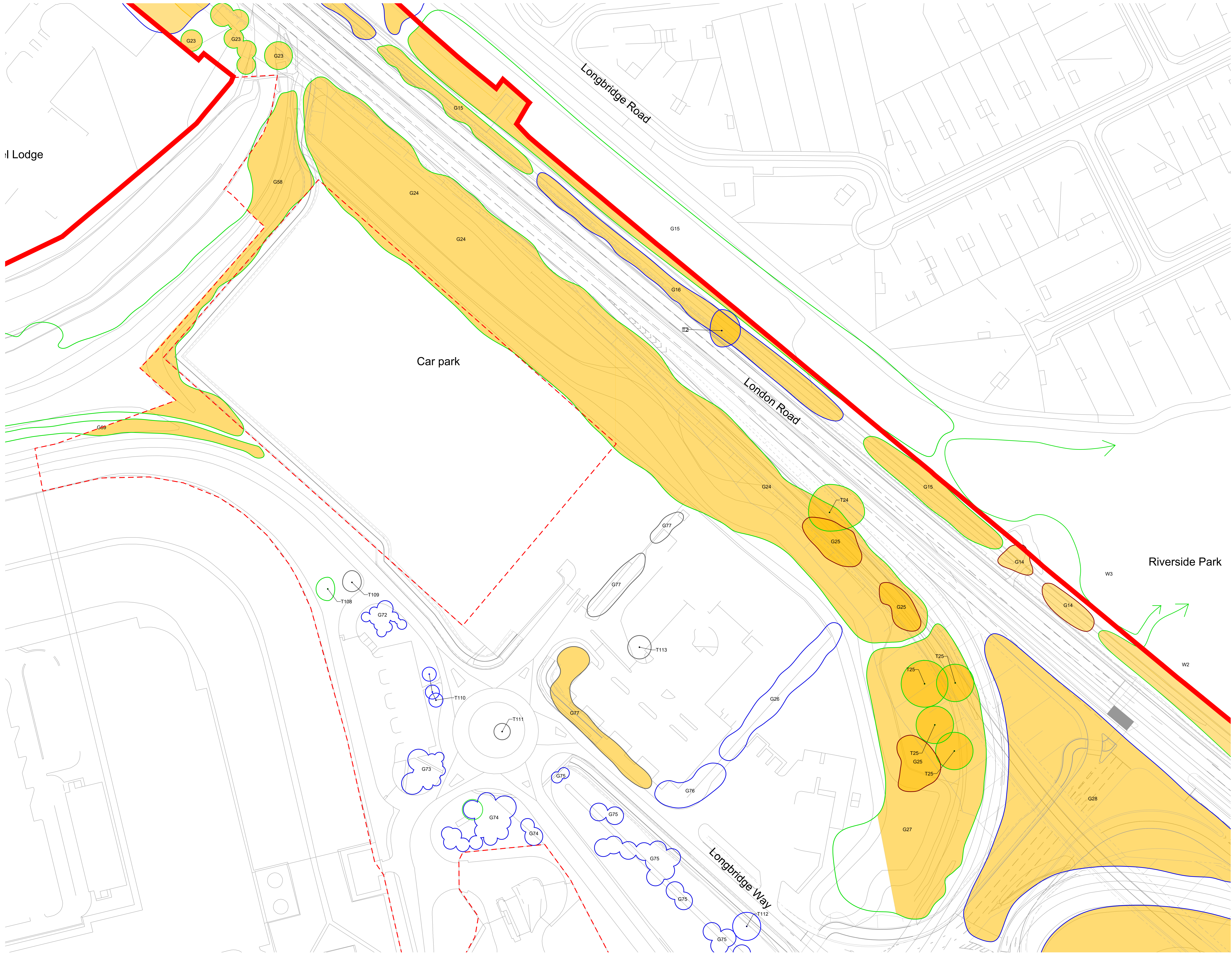
Book 5

VERSION: 3.0

DATE: JUNE 2024

Application Document Ref: 5.3

PINS Reference Number: TR020005



l Lodge

Car park

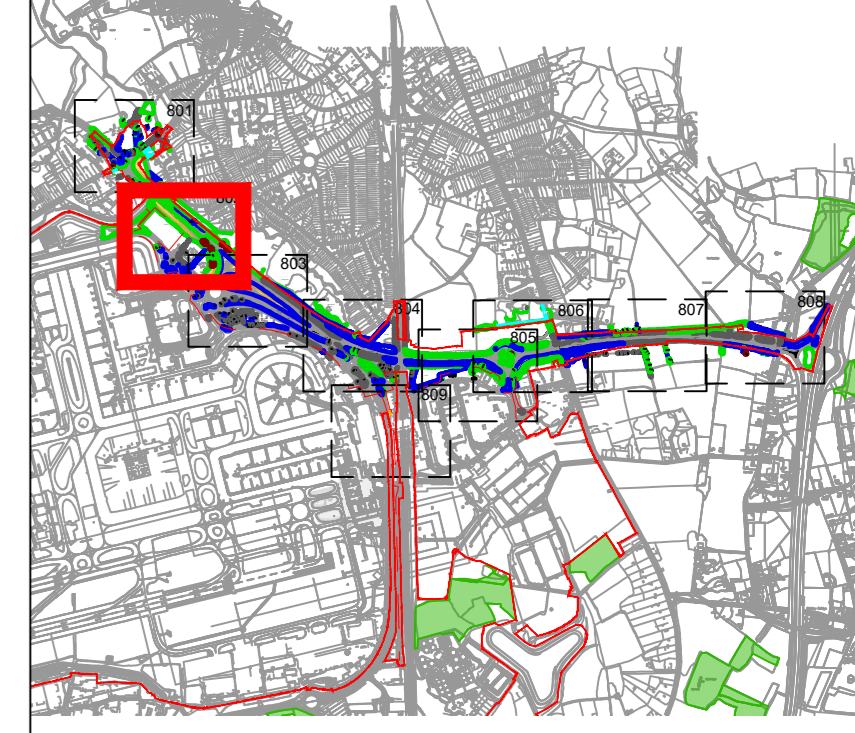
Riverside Park

Key

- Site Boundary
- Survey Boundary / Boundary of M23/A23 construction activity
- Projected Tree loss required for construction (Worst Case Scenario)
- Tree with numbered reference. Canopy spread and coloured BS5837:2012 tree quality category as shown below.
 # = Tree details estimate (inaccessible tree)
 * = Tree in off site location
- G1 Vegetation group with numbered reference. Canopy extents and BS5837:2012 tree quality category as shown below.
- H1 Hedge with numbered reference. Width and BS5837:2012 tree quality category as shown below.
- BS 5837:2012 Tree Quality Categories - Table 1**
- Category A - High quality
- Category B - Moderate quality
- Category C - Low quality
- Category U - Unsuitable for retention
- Tree protected by Tree Preservation Order. Bracketted number relates to the TPO reference.

NOTE:
 Refer to ES Appendix 8.10.1: Tree Survey Report and Arboricultural Impact Assessment for further details.

Key Plan



DOCUMENT
Environmental Statement

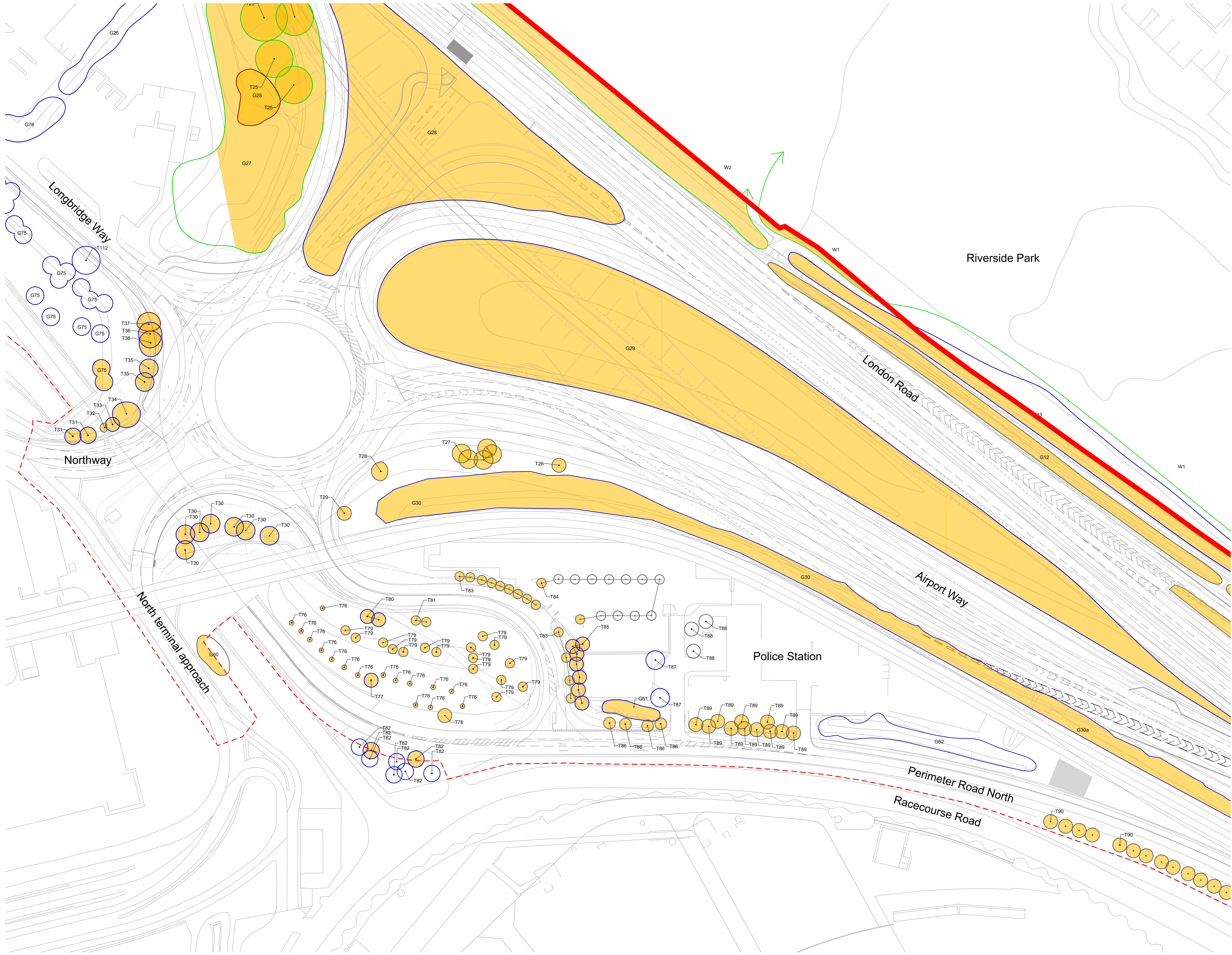
DRAWING TITLE
M23 & A23 Preliminary Tree Removal Plans
 Appendix 8.10.1
 Sheet 2 of 9

DATE
June 2024

ORIENTATION N	DRAWING NO. 802	REVISION For ES Issue
	DRAWN BY RC	PM / CHECKED BY DC

SCALE @ A0

Reproduced from Ordnance Survey map with the permission of Ordnance Survey on behalf of the controller of Her Majesty's Stationery Office © Crown Copyright (2023). License number 0100031673, 10001998, 100048492.
 © Copyright 2023 Gatwick Airport Limited. No part of this drawing is to be reproduced without prior permission of Gatwick Airport Limited.



Key

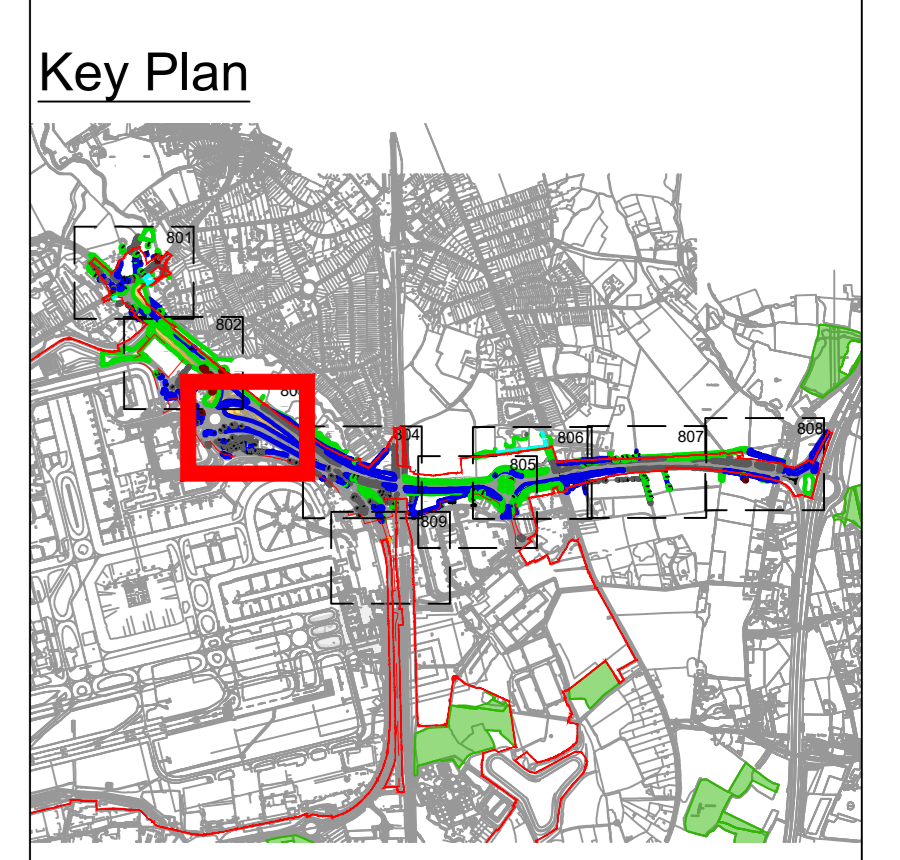
- Site Boundary
- Survey Boundary / Boundary of M23/A23 construction activity
- Projected Tree loss required for construction (Worst Case Scenario)
- Tree with numbered reference. Canopy spread and coloured BS5837:2012 tree quality category as shown below.
 # = Tree details estimate (inaccessible tree)
 * = Tree in off site location
- G1 Vegetation group with numbered reference. Canopy extents and BS5837:2012 tree quality category as shown below.
- H1 Hedge with numbered reference. Width and BS5837:2012 tree quality category as shown below.

BS 5837:2012 Tree Quality Categories - Table 1

- Category A - High quality
- Category B - Moderate quality
- Category C - Low quality
- Category U - Unsuitable for retention

Tree protected by Tree Preservation Order. Bracketted number relates to the TPO reference.

NOTE:
 * Refer to ES Appendix 8.10.1: Tree Survey Report and Arboricultural Impact Assessment for further details.



DOCUMENT

Environmental Statement

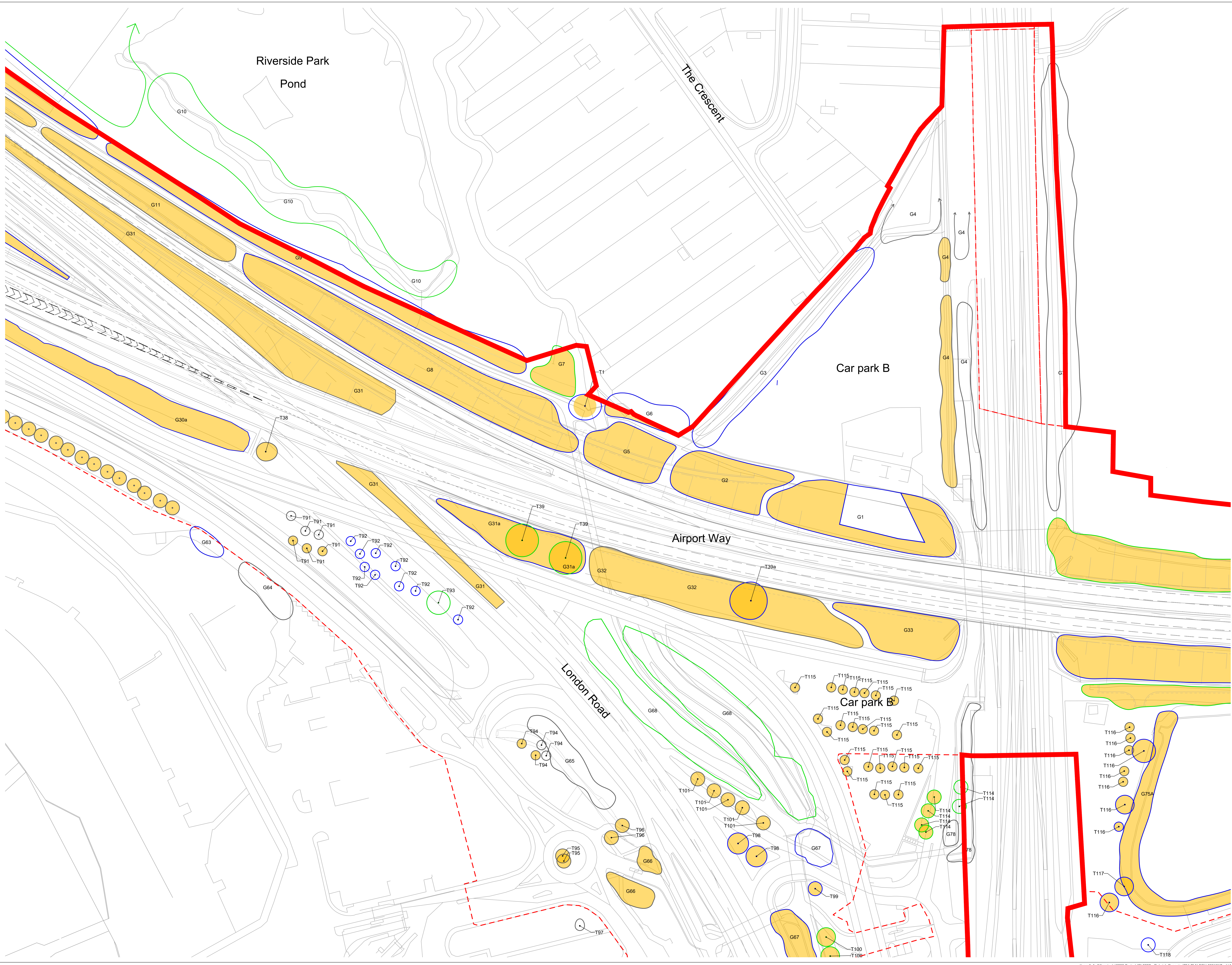
DRAWING TITLE
M23 & A23 Preliminary Tree Removal Plans
 Appendix 8.10.1
 Sheet 3 of 9

DATE
June 2024

ORIENTATION N	DRAWING NO. 803	REVISION For ES Issue
	DRAWN BY RC	PM / CHECKED BY DC

SCALE @ A0

Reproduced from Ordnance Survey map with the permission of Ordnance Survey on behalf of the controller of Her Majesty's Stationery Office © Crown Copyright (2023). License number 0100031673, 10001998, 100048492.
 © Copyright 2023 Gatwick Airport Limited. No part of this drawing is to be reproduced without prior permission of Gatwick Airport Limited.



Key

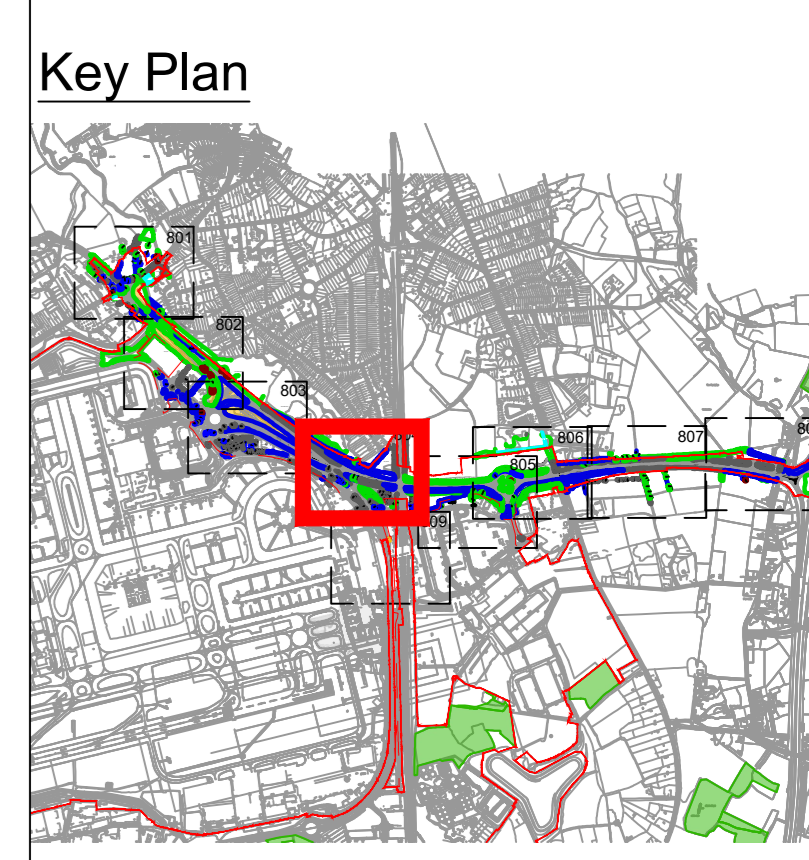
- Site Boundary
- Survey Boundary / Boundary of M23/A23 construction activity
- Projected Tree loss required for construction (Worst Case Scenario)
- Tree with numbered reference. Canopy spread and coloured BS5837:2012 tree quality category as shown below.
 # = Tree details estimate (inaccessible tree)
 * = Tree in off site location
- G1 Vegetation group with numbered reference. Canopy extents and BS5837:2012 tree quality category as shown below.
- H1 Hedge with numbered reference. Width and BS5837:2012 tree quality category as shown below.

BS 5837:2012 Tree Quality Categories - Table 1

- Category A - High quality
- Category B - Moderate quality
- Category C - Low quality
- Category U - Unsuitable for retention

G1 Tree protected by Tree Preservation Order. Bracketted number relates to the TPO reference.

NOTE:
 Refer to ES Appendix 8.10.1: Tree Survey Report and Arboricultural Impact Assessment for further details.



DOCUMENT

Environmental Statement

DRAWING TITLE
M23 & A23 Preliminary Tree Removal Plans
 Appendix 8.10.1
 Sheet 4 of 9

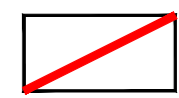
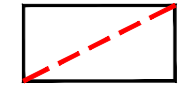


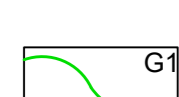
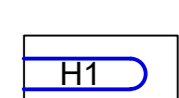


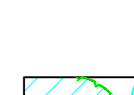
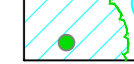
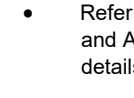
DATE
 June 2024

ORIENTATION	DRAWING NO.	REVISION
N	804	For ES Issue
	DRAWN BY RC	PM / CHECKED BY DC

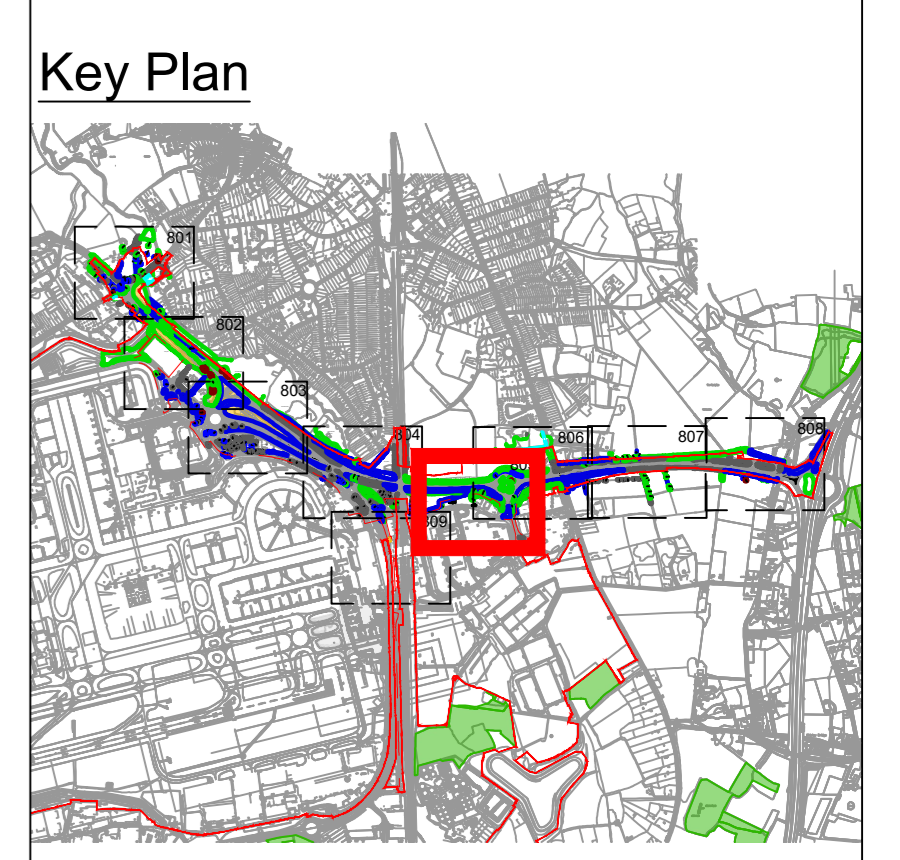
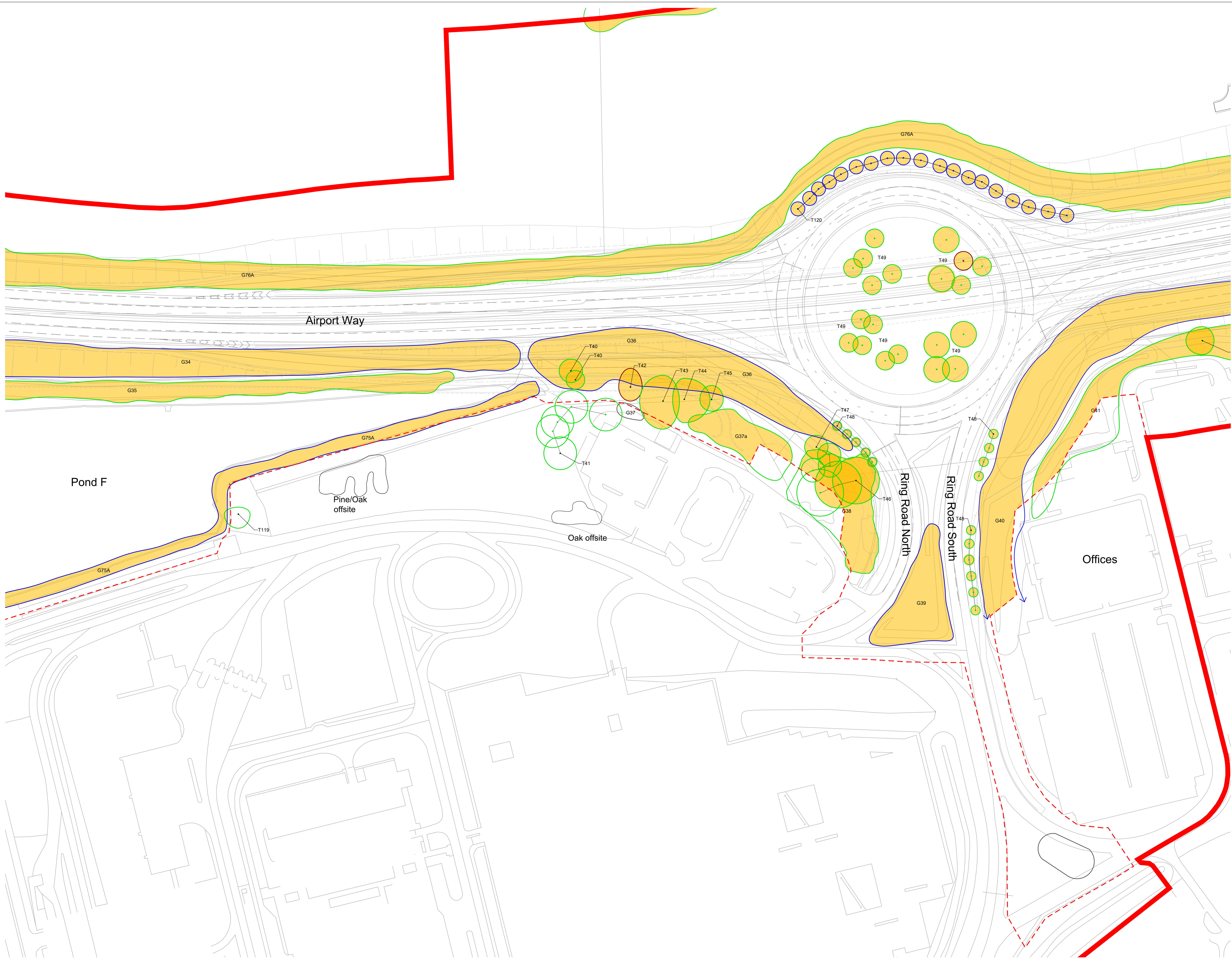
SCALE @ A0

Reproduced from Ordnance Survey map with the permission of Ordnance Survey on behalf of the controller of Her Majesty's Stationery Office
 © Crown Copyright (2023). Licence number 0100031673, 10001998, 100048492.
 © Copyright 2023 Gatwick Airport Limited. No part of this drawing is to be reproduced without prior permission of Gatwick Airport Limited.

Key

-  Site Boundary
 -  Survey Boundary / Boundary of M23/A23 construction activity
 -  Projected Tree loss required for construction (Worst Case Scenario)
 -  Tree with numbered reference. Canopy spread and coloured BS5837:2012 tree quality category as shown below.
= Tree details estimate (inaccessible tree)
• = Tree in off site location
 -  G1 Vegetation group with numbered reference. Canopy extents and BS5837:2012 tree quality category as shown below.
 -  H1 Hedge with numbered reference. Width and BS5837:2012 tree quality category as shown below.
- BS 5837:2012 Tree Quality Categories - Table 1
-  Category A - High quality
 -  Category B - Moderate quality
 -  Category C - Low quality
 -  Category U - Unsuitable for retention
-  Tree protected by Tree Preservation Order. Bracketted number relates to the TPO reference.

NOTE:
• Refer to ES Appendix 8.10.1: Tree Survey Report and Arboricultural Impact Assessment for further details.



DOCUMENT

Environmental Statement

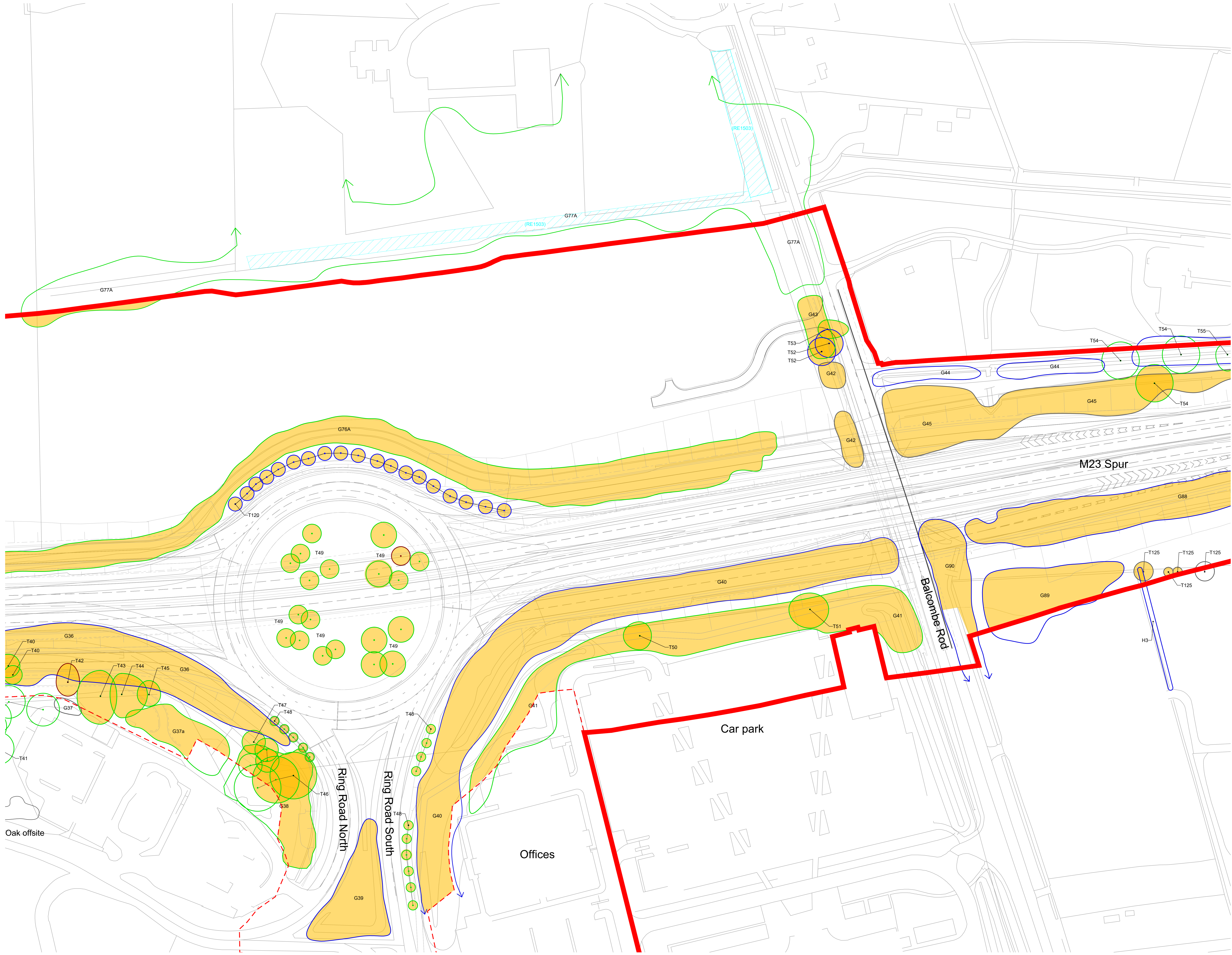
DRAWING TITLE
M23 & A23 Preliminary Tree Removal Plans
Appendix 8.10.1
Sheet 5 of 9

DATE
June 2024

ORIENTATION N ▲	DRAWING NO. 805	REVISION For ES Issue
	DRAWN BY RC	PM / CHECKED BY DC

SCALE @ A0

Reproduced from Ordnance Survey map with the permission of Ordnance Survey on behalf of the controller of Her Majesty's Stationery Office © Crown Copyright (2023). License number 0100031673, 10001998, 100048492.
© Copyright 2023 Gatwick Airport Limited. No part of this drawing is to be reproduced without prior permission of Gatwick Airport Limited.



Key

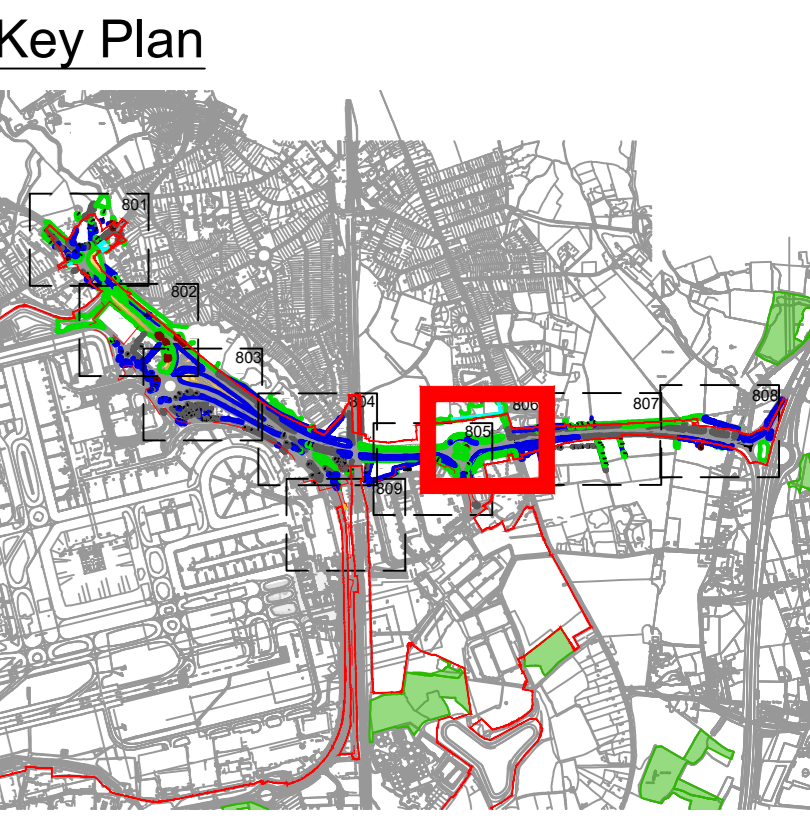
- Site Boundary
- Survey Boundary / Boundary of M23/A23 construction activity
- Projected Tree loss required for construction (Worst Case Scenario)
- Tree with numbered reference. Canopy spread and coloured BS5837:2012 tree quality category as shown below.
 - = Tree details estimate (inaccessible tree)
 - = Tree in off site location
- G1 Vegetation group with numbered reference. Canopy extents and BS5837:2012 tree quality category as shown below.
- H1 Hedge with numbered reference. Width and BS5837:2012 tree quality category as shown below.

BS 5837:2012 Tree Quality Categories - Table 1

- Category A - High quality
- Category B - Moderate quality
- Category C - Low quality
- Category U - Unsuitable for retention

Tree protected by Tree Preservation Order. Bracketted number relates to the TPO reference.

NOTE:
 Refer to ES Appendix 8.10.1: Tree Survey Report and Arboricultural Impact Assessment for further details.



DOCUMENT

Environmental Statement

DRAWING TITLE
M23 & A23 Preliminary Tree Removal Plans
 Appendix 8.10.1
 Sheet 6 of 9

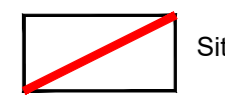
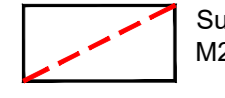


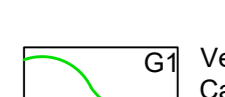
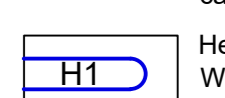


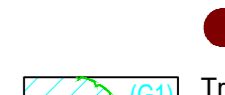
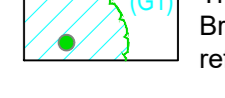
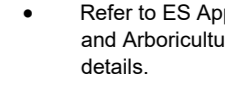
DATE
 June 2024

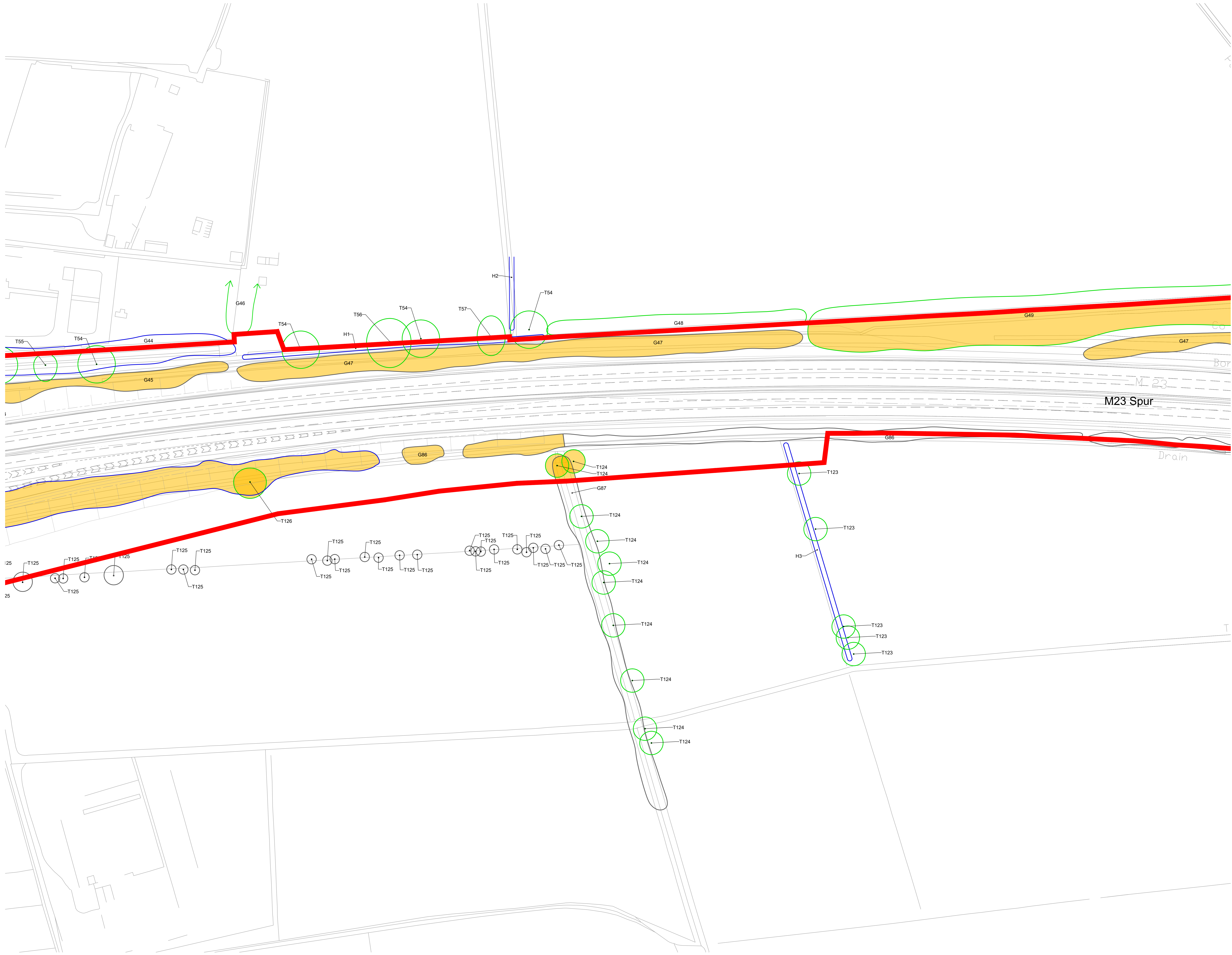
ORIENTATION	DRAWING NO.	REVISION
N	806	For ES Issue
	DRAWN BY	PM / CHECKED BY
	RC	DC

SCALE @ A0

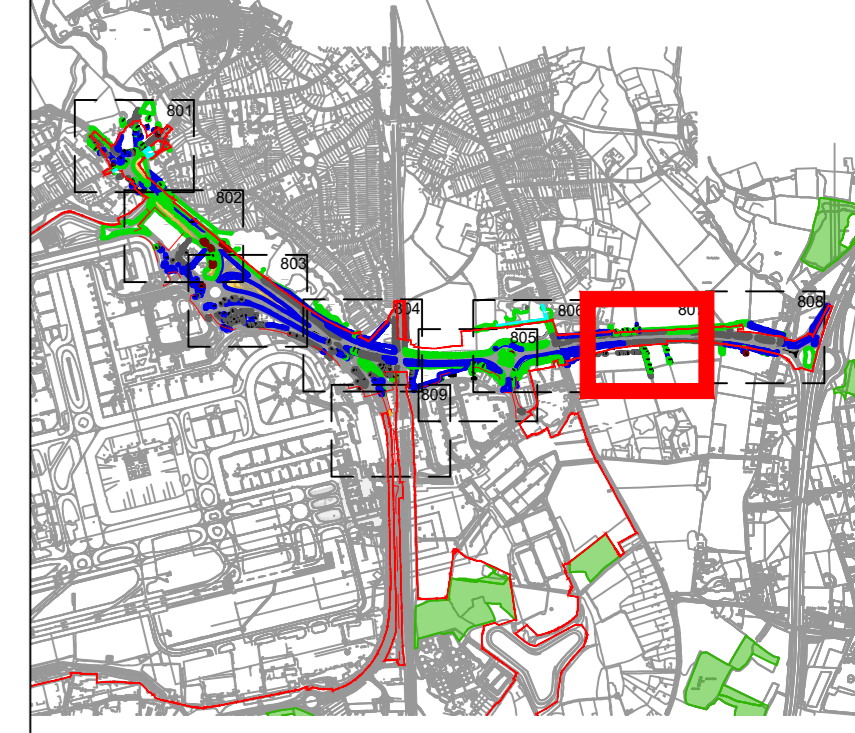
Reproduced from Ordnance Survey map with the permission of Ordnance Survey on behalf of the controller of Her Majesty's Stationery Office © Crown Copyright (2023). License number 0100031673, 10001998, 100048492.
 © Copyright 2023 Gatwick Airport Limited. No part of this drawing is to be reproduced without prior permission of Gatwick Airport Limited.

Key

-  Site Boundary
 -  Survey Boundary / Boundary of M23/A23 construction activity
 -  Projected Tree loss required for construction (Worst Case Scenario)
 -  Tree with numbered reference. Canopy spread and coloured BS5837:2012 tree quality category as shown below.
= Tree details estimate (inaccessible tree)
• = Tree in off site location
 -  G1 Vegetation group with numbered reference. Canopy extents and BS5837:2012 tree quality category as shown below.
 -  H1 Hedge with numbered reference. Width and BS5837:2012 tree quality category as shown below.
 - BS 5837:2012 Tree Quality Categories - Table 1**
 -  Category A - High quality
 -  Category B - Moderate quality
 -  Category C - Low quality
 -  Category U - Unsuitable for retention
 -  Tree protected by Tree Preservation Order. Bracketted number relates to the TPO reference.
- NOTE:**
 • Refer to ES Appendix 8.10.1: Tree Survey Report and Arboricultural Impact Assessment for further details.



Key Plan



DOCUMENT

Environmental Statement

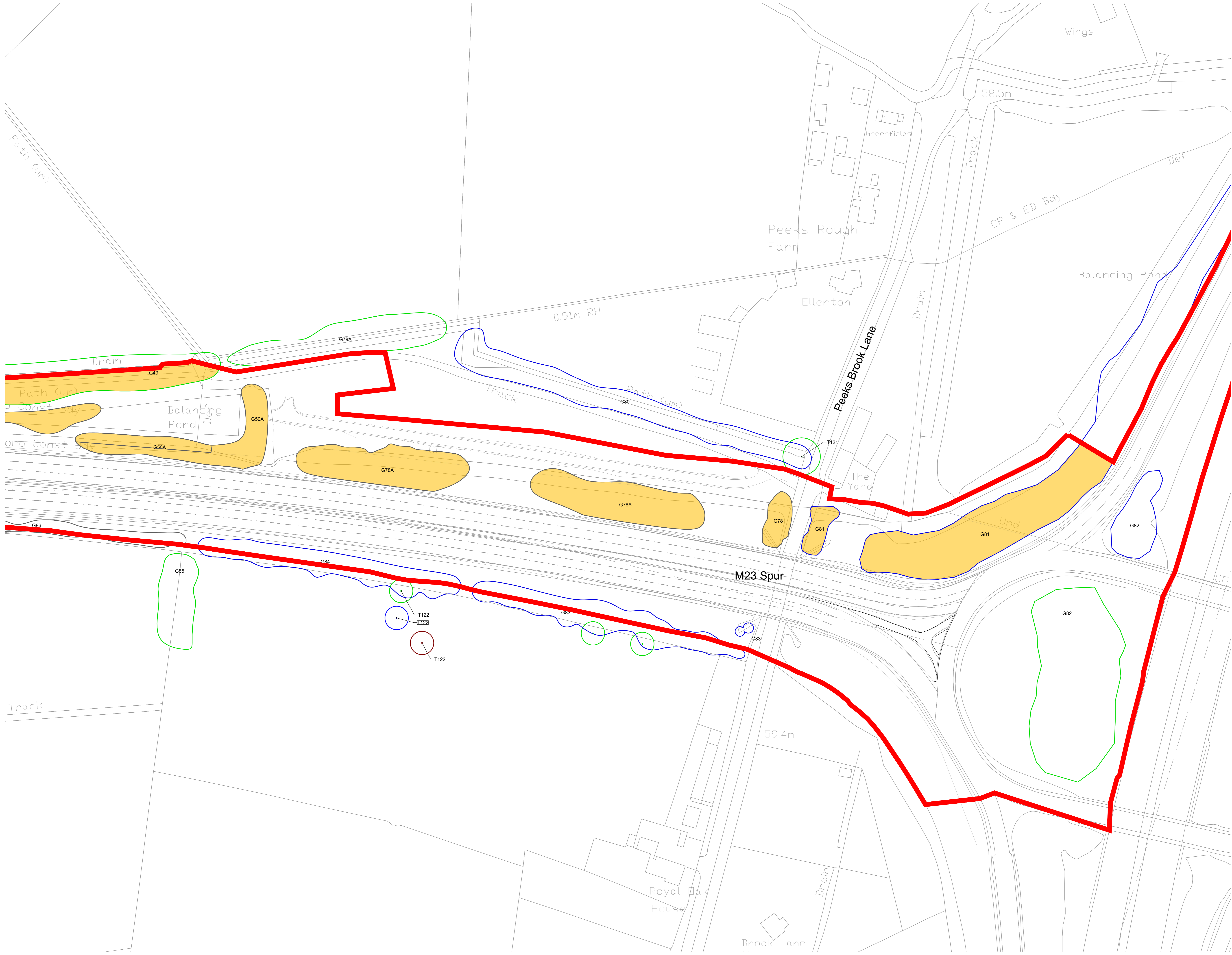
DRAWING TITLE
 M23 & A23 Preliminary Tree Removal Plans
 Appendix 8.10.1
 Sheet 7 of 9

DATE
 June 2024

ORIENTATION N	DRAWING NO. 807	REVISION For ES Issue
	DRAWN BY RC	PM / CHECKED BY DC

SCALE @ A0

Reproduced from Ordnance Survey map with the permission of Ordnance Survey on behalf of the controller of Her Majesty's Stationery Office © Crown Copyright (2023). License number 0100031673, 100048492.
 © Copyright 2023 Gatwick Airport Limited. No part of this drawing is to be reproduced without prior permission of Gatwick Airport Limited.



Key

- Site Boundary
- Survey Boundary / Boundary of M23/A23 construction activity
- Projected Tree loss required for construction (Worst Case Scenario)
- Tree with numbered reference. Canopy spread and coloured BS5837:2012 tree quality category as shown below.
 - Tree details estimate (inaccessible tree)
 - Tree in off site location
- G1 Vegetation group with numbered reference. Canopy extents and BS5837:2012 tree quality category as shown below.
- H1 Hedge with numbered reference. Width and BS5837:2012 tree quality category as shown below.

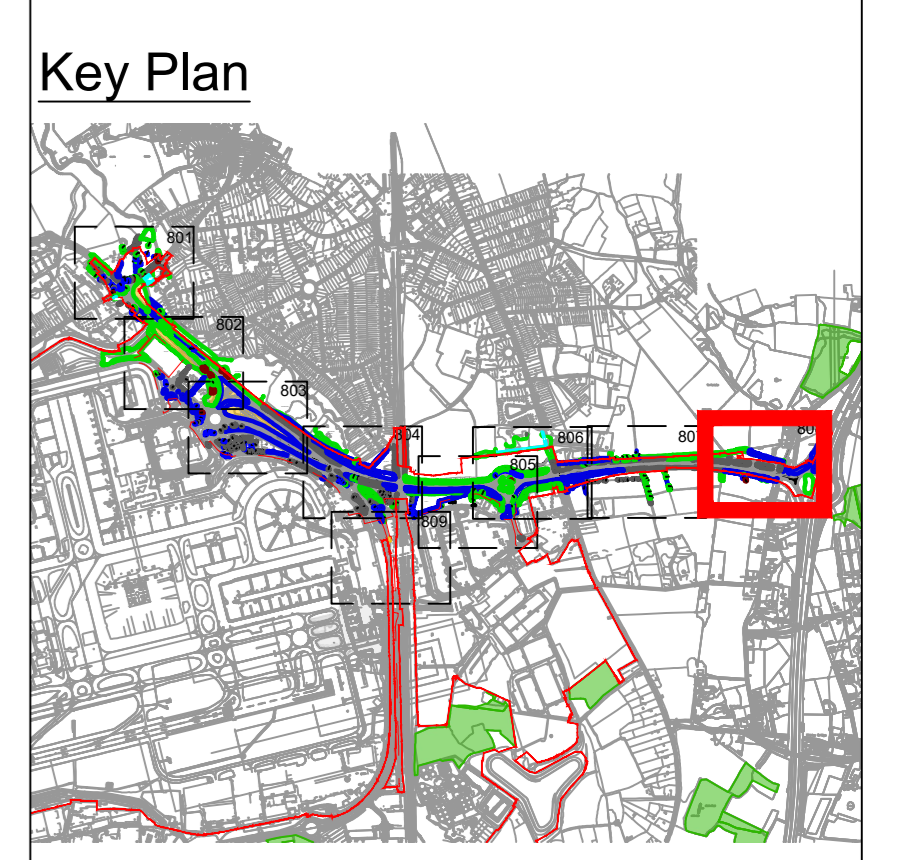
BS 5837:2012 Tree Quality Categories - Table 1

- Category A - High quality
- Category B - Moderate quality
- Category C - Low quality
- Category U - Unsuitable for retention

G11 Tree protected by Tree Preservation Order. Bracketted number relates to the TPO reference.

NOTE:

- Refer to ES Appendix 8.10.1: Tree Survey Report and Arboricultural Impact Assessment for further details.



DOCUMENT

Environmental Statement

DRAWING TITLE

M23 & A23 Preliminary Tree Removal Plans

Appendix 8.10.1

Sheet 8 of 9

DATE

June 2024

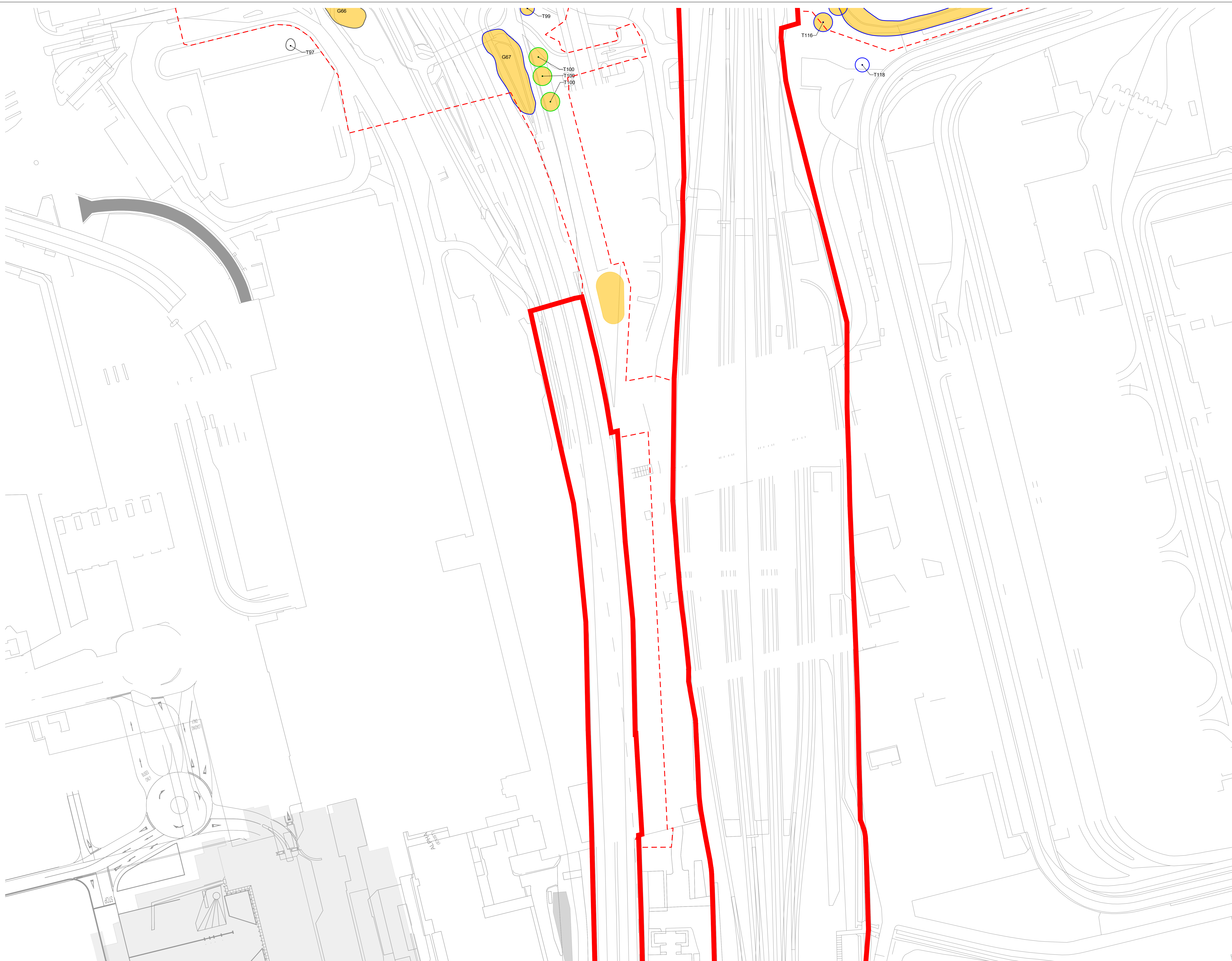
ORIENTATION	DRAWING NO.	REVISION
N	808	For ES Issue
	DRAWN BY	PM / CHECKED BY
	RC	DC

SCALE @ A0

Reproduced from Ordnance Survey map with the permission of Ordnance Survey on behalf of the controller of Her Majesty's Stationery Office © Crown Copyright (2023). License number 0100031673, 10004892, 10004892.

© Copyright 2023 Gatwick Airport Limited. No part of this drawing is to be reproduced without prior permission of Gatwick Airport Limited.

\\sru-hs-01\projects\3200 Series\SLI_3287 - Gatwick Genesis (194-PLN-ESH-00016)\Tech\Acad\Current\Appendix H - AIA TRP.dwg



Key

- Site Boundary
- Survey Boundary / Boundary of M23/A23 construction activity
- Projected Tree loss required for construction (Worst Case Scenario)
- Tree with numbered reference. Canopy spread and coloured BS5837:2012 tree quality category as shown below.
 - = Tree details estimate (inaccessible tree)
 - = Tree in off site location
- G1 Vegetation group with numbered reference. Canopy extents and BS5837:2012 tree quality category as shown below.
- H1 Hedge with numbered reference. Width and BS5837:2012 tree quality category as shown below.

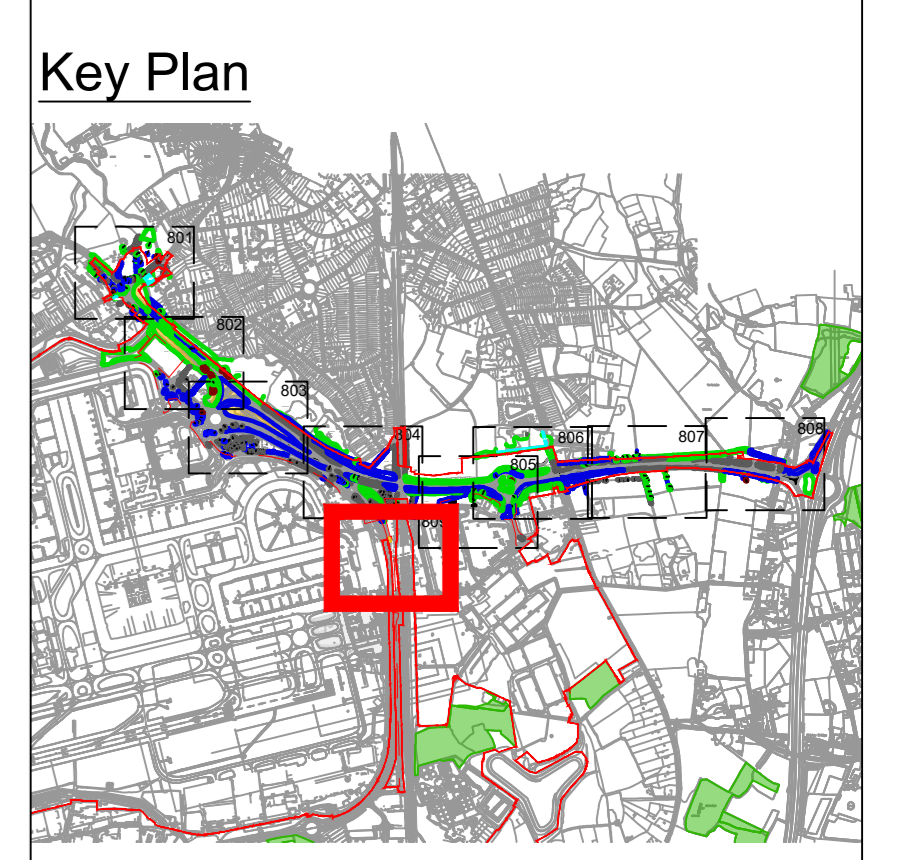
BS 5837:2012 Tree Quality Categories - Table 1

- Category A - High quality
- Category B - Moderate quality
- Category C - Low quality
- Category U - Unsuitable for retention

Tree protected by Tree Preservation Order. Bracketted number relates to the TPO reference.

NOTE:

- Refer to ES Appendix 8.10.1: Tree Survey Report and Arboricultural Impact Assessment for further details.



DOCUMENT

Environmental Statement

DRAWING TITLE
M23 & A23 Preliminary Tree Removal Plans
Appendix 8.10.1
Sheet 9 of 9

DATE
June 2024

ORIENTATION 	DRAWING NO. 809	REVISION For ES Issue
	DRAWN BY RC	PM / CHECKED BY DC

SCALE @ A0

Reproduced from Ordnance Survey map with the permission of Ordnance Survey on behalf of the controller of Her Majesty's Stationery Office © Crown Copyright (2023). License number 0100031673, 10001998, 100048492.
© Copyright 2023 Gatwick Airport Limited. No part of this drawing is to be reproduced without prior permission of Gatwick Airport Limited.

Appendix I
Airport Preliminary Tree Removal Plans



Key

- Site boundary.
 - Survey boundary.
 - Tree with numbered reference. Canopy spread and coloured BS5837:2012 tree quality category as shown below.
 - Tree details estimate (inaccessible tree)
 - Tree in off site location
 - Tree group plotted with individual stem locations and numbered reference. Canopy extents coloured to match BS5837:2012 tree quality category as shown below.
 - Tree or Vegetation group with numbered reference. Canopy extents coloured to match BS5837:2012 tree quality category as shown below and dashed line to show indicative stem line.
 - Hedge with numbered reference. Canopy extents and coloured BS5837:2012 tree quality category as shown below and dashed line to show hedge centerline.
 - Woodland with numbered reference. Canopy extents coloured to match BS5837:2012 tree quality category as shown below and dashed line to show indicative tree line.
- BS 5837:2012 Tree Quality Categories - Table 1**
- Category A - High quality
 - Category B - Moderate quality
 - Category C - Low quality
 - Category U - Unsuitable for retention
- Direction of first significant branch
 - Root protection area (RPA). Calculated in accordance with Section 4.6 - BS5837:2012
 - Veteran tree buffer (15 x stem Ø) (as per standing advice produced by Forestry England and Natural England)
 - Tree protected by Tree Preservation Order. Bracketted number relates to the TPO reference.
 - Designated Ancient Woodland (as per Natural England ancient woodland inventory, via open data publication)
 - Ancient Woodland tree buffer (15m offset) (as per standing advice produced by Forestry England and Natural England)
 - Projected tree loss required for construction of the Project (worst case scenario)
 - Indicative Scheme Layout

NOTES:

- Refer to ES Appendix 8.10.1: Tree Survey Report and Arboricultural Impact Assessment for further details.
- Survey based on a visual inspection from the ground and is not intended as a full arboricultural inspection.
- Plan produced in accordance with recommendations set out in BS 5837:2012 - 'Trees in Relation to design, demolition and construction'.
- Survey based upon Aerial Photography and trees located by eye.

DOCUMENT

Environmental Statement

DRAWING TITLE

**Airport Preliminary Tree Removal Plans
Appendix 8.10.1
Overview**

DATE

June 2024

ORIENTATION

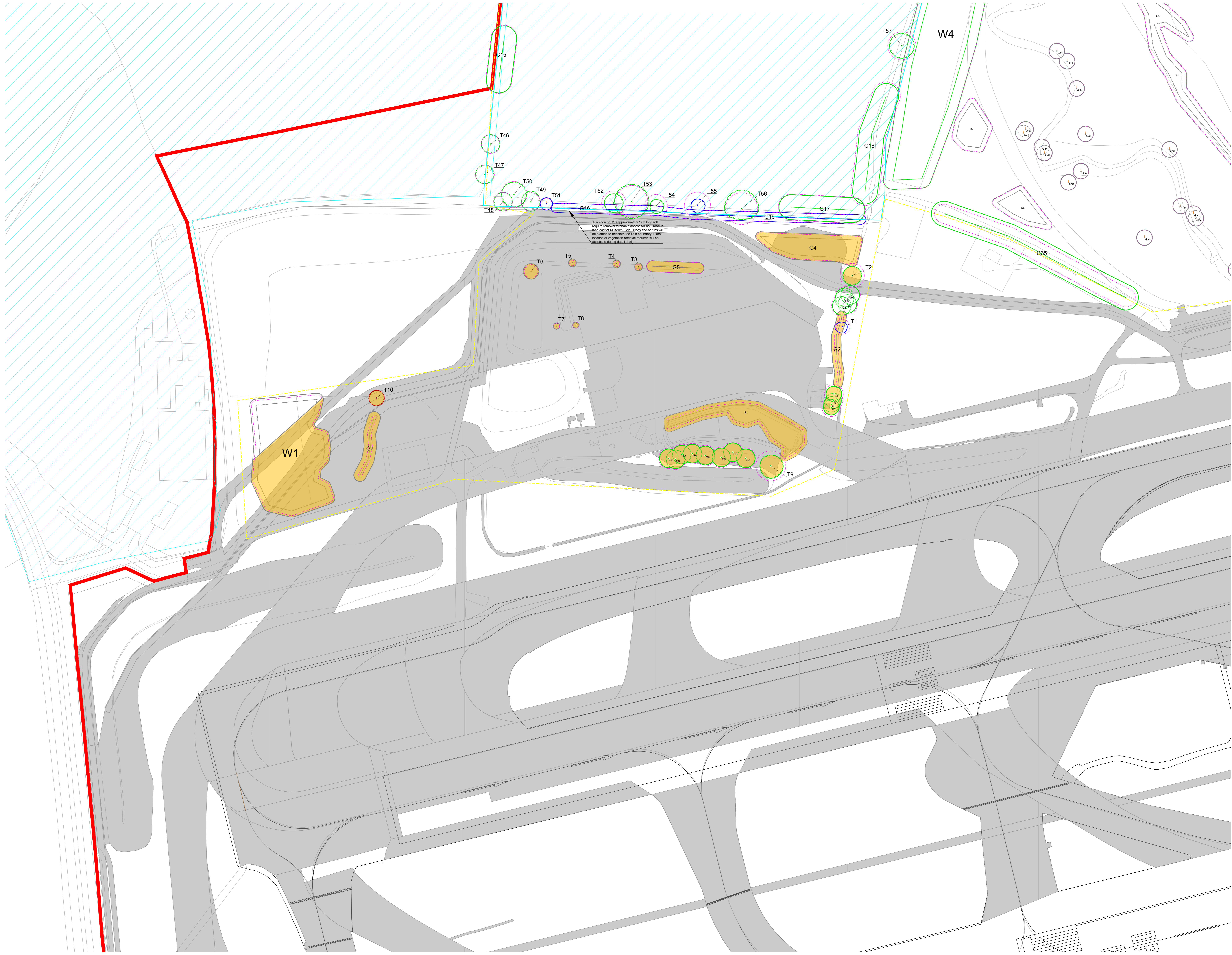


DRAWING NO.	REVISION
735	For ES Issue

DRAWN BY	PM / CHECKED BY
RC	DC

SCALE @ A0

Custom Scale



Key

- Site boundary.
- Survey boundary.
- Tree with numbered reference. Canopy spread and coloured BS5837:2012 tree quality category as shown below.
 - Tree details estimate (inaccessible tree)
 - Tree in off site location
- G1 Tree group plotted with individual stem locations and numbered reference. Canopy extents coloured to match BS5837:2012 tree quality category as shown below.
- G1 Tree or Vegetation group with numbered reference. Canopy extents coloured to match BS5837:2012 tree quality category as shown below and dashed line to show indicative stem line.
- H1 Hedge with numbered reference. Canopy extents and coloured BS5837:2012 tree quality category as shown below and dashed line to show hedge centerline.
- W1 Woodland with numbered reference. Canopy extents and coloured BS5837:2012 tree quality category as shown below and dashed line to show indicative tree line.

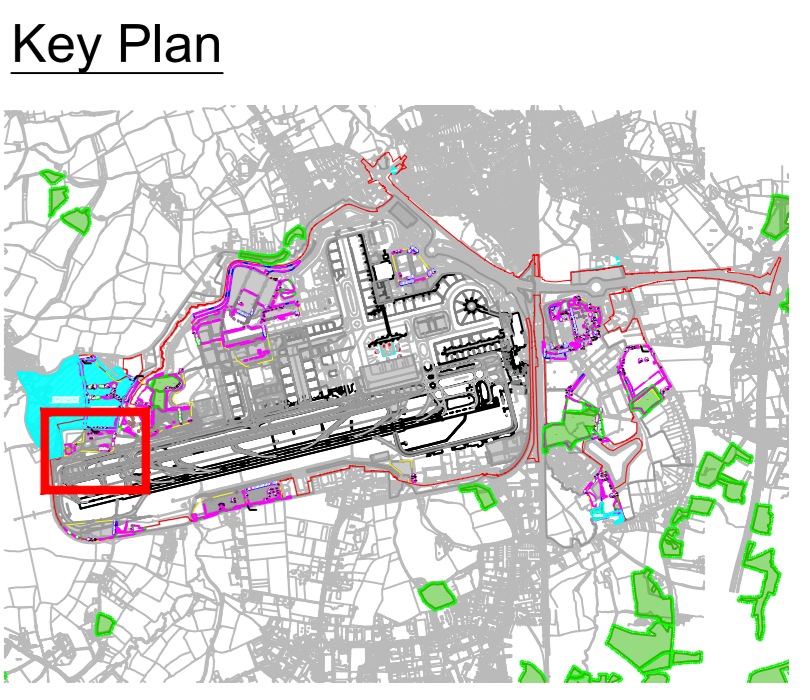
BS 5837:2012 Tree Quality Categories - Table 1

- Category A - High quality
- Category B - Moderate quality
- Category C - Low quality
- Category U - Unsuitable for retention

- Direction of first significant branch
- Root protection area (RPA). Calculated in accordance with Section 4.6 - BS5837:2012
- Veteran tree buffer (15 x stem Ø) (as per standing advice produced by Forestry England and Natural England)
- Tree protected by Tree Preservation Order. Bracketed number relates to the TPO reference.
- Designated Ancient Woodland (as per Natural England ancient woodland inventory, via open data publication)
- Ancient Woodland tree buffer (15m offset) (as per standing advice produced by Forestry England and Natural England)
- Projected tree loss required for construction of the Project (worst case scenario)
- Indicative Scheme Layout

NOTES:

- Refer to ES Appendix 8.10.1: Tree Survey Report and Arboricultural Impact Assessment for further details.
- Survey based on a visual inspection from the ground and is not intended as a full arboricultural inspection.
- Plan produced in accordance with recommendations set out in BS 5837:2012 - 'Trees in Relation to design, demolition and construction'.
- Survey based upon Aerial Photography and trees located by eye.



DOCUMENT

Environmental Statement

DRAWING TITLE

**Airport Preliminary Tree Removal Plans
Appendix 8.10.1
Sheet 1 of 13**

DATE

June 2024

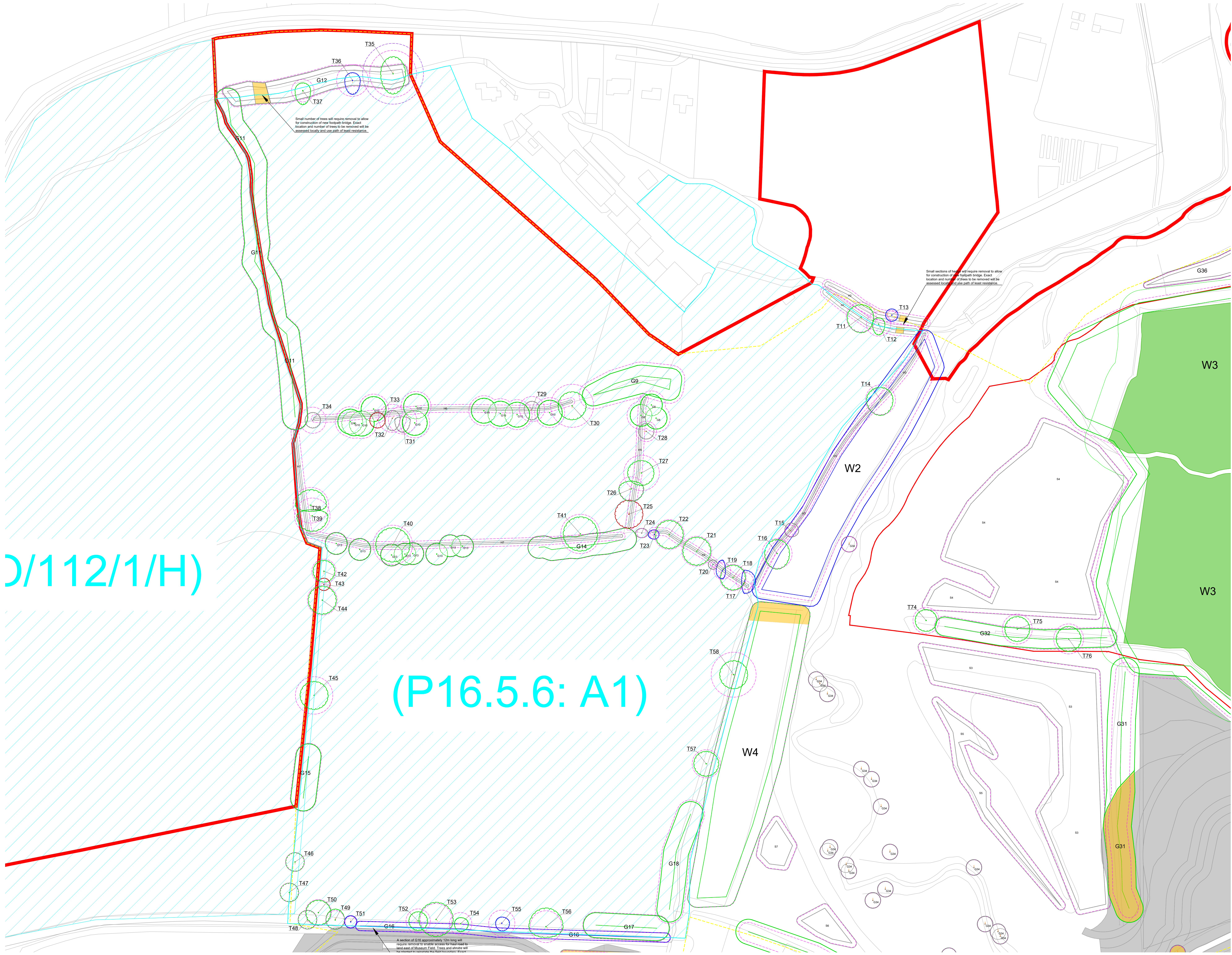
ORIENTATION	DRAWING NO.	REVISION
	736	For ES Issue
	DRAWN BY	PM / CHECKED BY
	RC	DC

SCALE @ A0

0m 25m 50m

Reproduced from Ordnance Survey map with the permission of Ordnance Survey on behalf of the controller of Her Majesty's Stationery Office © Crown Copyright (2023). License number 610031673, 10001998, 100048492.

© Copyright 2023 Gatwick Airport Limited. No part of this drawing is to be reproduced without prior permission of Gatwick Airport Limited.



Key

- Site boundary.
- Survey boundary.
- Tree with numbered reference. Canopy spread and coloured BS5837:2012 tree quality category as shown below.
 - Tree details estimate (inaccessible tree)
 - Tree in off site location
- G1 Tree group plotted with individual stem locations and numbered reference. Canopy extents coloured to match BS5837:2012 tree quality category as shown below.
- G1 Tree or Vegetation group with numbered reference. Canopy extents coloured to match BS5837:2012 tree quality category as shown below and dashed line to show indicative stem line.
- H1 Hedge with numbered reference. Canopy extents and coloured BS5837:2012 tree quality category as shown below and dashed line to show hedge centerline.
- W1 Woodland with numbered reference. Canopy extents and coloured BS5837:2012 tree quality category as shown below and dashed line to show indicative tree line.

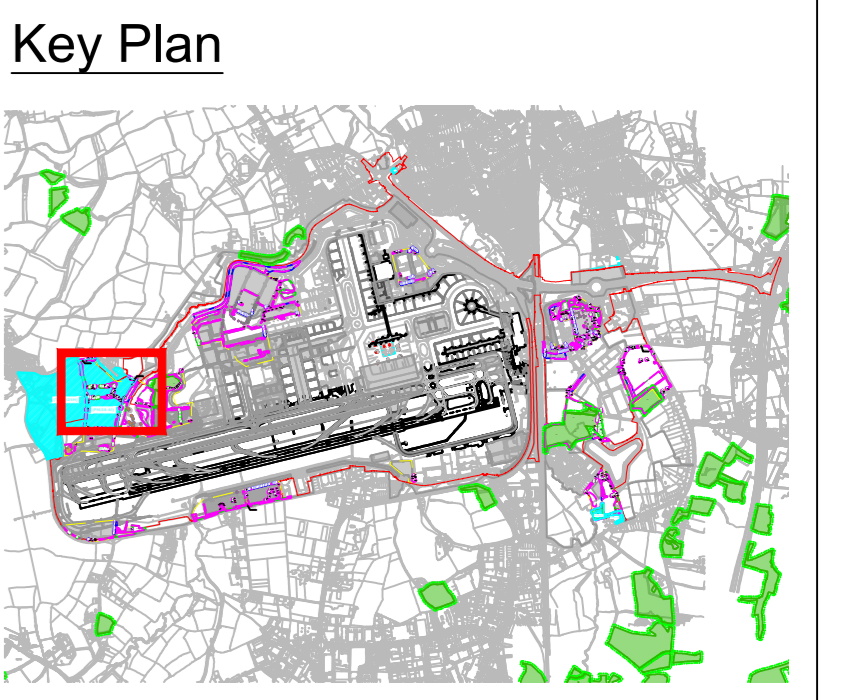
BS 5837:2012 Tree Quality Categories - Table 1

- Category A - High quality
- Category B - Moderate quality
- Category C - Low quality
- Category U - Unsuitable for retention

- Direction of first significant branch
- Root protection area (RPA) Calculated in accordance with Section 4.6 - BS5837:2012
- Veteran tree buffer (15 x stem Ø) (as per standing advice produced by Forestry England and Natural England)
- Tree protected by Tree Preservation Order. Bracketted number relates to the TPO reference.
- Designated Ancient Woodland (as per Natural England ancient woodland inventory, via open data publication)
- Ancient Woodland tree buffer (15m offset) (as per standing advice produced by Forestry England and Natural England)
- Projected tree loss required for construction of the Project (worst case scenario)
- Indicative Scheme Layout

NOTES:

- Refer to ES Appendix 8.10.1: Tree Survey Report and Arboricultural Impact Assessment for further details.
- Survey based on a visual inspection from the ground and is not intended as a full arboricultural inspection.
- Plan produced in accordance with recommendations set out in BS 5837:2012 - 'Trees in Relation to design, demolition and construction'.
- Survey based upon Aerial Photography and trees located by eye.



(D/112/1/H)

(P16.5.6: A1)

DOCUMENT

Environmental Statement

DRAWING TITLE

Airport Preliminary Tree Removal Plans Appendix 8.10.1 Sheet 2 of 13

DATE

June 2024

ORIENTATION	DRAWING NO.	REVISION
N	737	For ES Issue
	DRAWN BY	PM / CHECKED BY
	RC	DC

SCALE @ A0

0m 25m 50m

Reproduced from Ordnance Survey map with the permission of Ordnance Survey on behalf of the controller of Her Majesty's Stationery Office © Crown Copyright (2023). License number 0100031673, 10001998, 100048492.

© Copyright 2023 Gatwick Airport Limited. No part of this drawing is to be reproduced without prior permission of Gatwick Airport Limited.